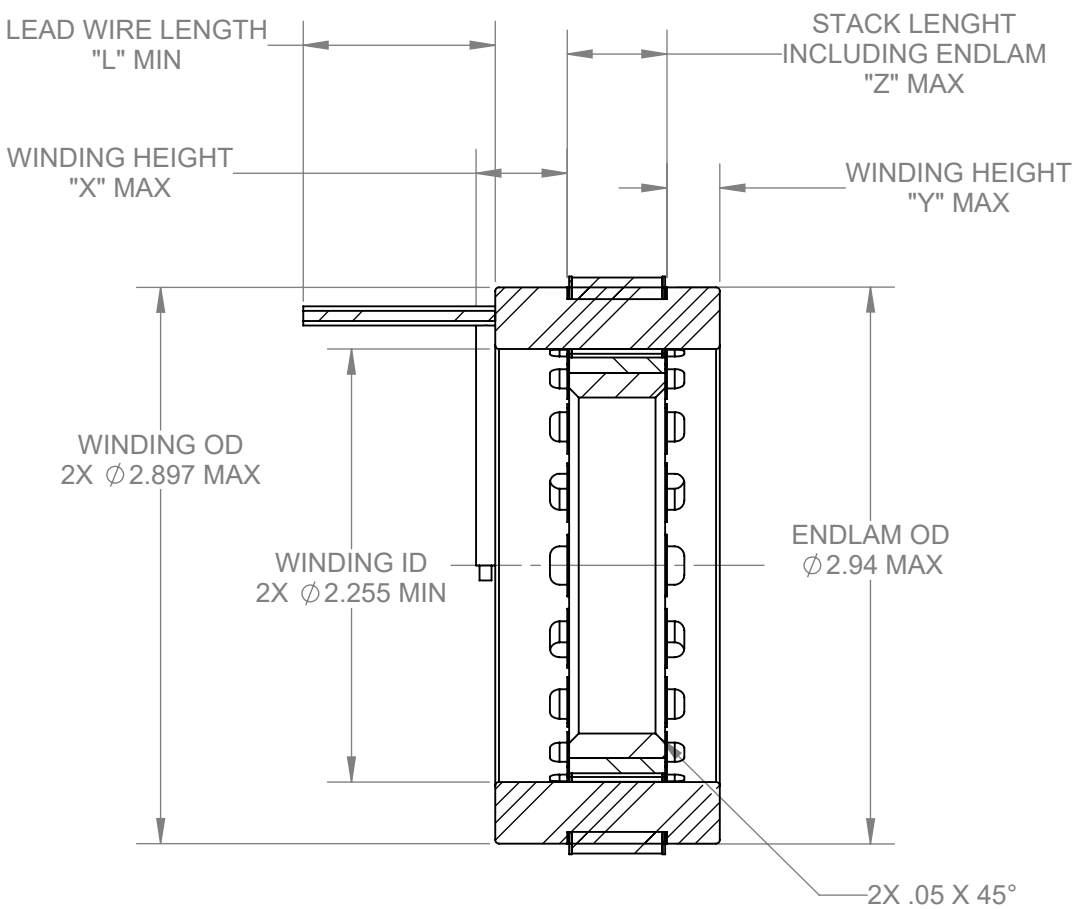
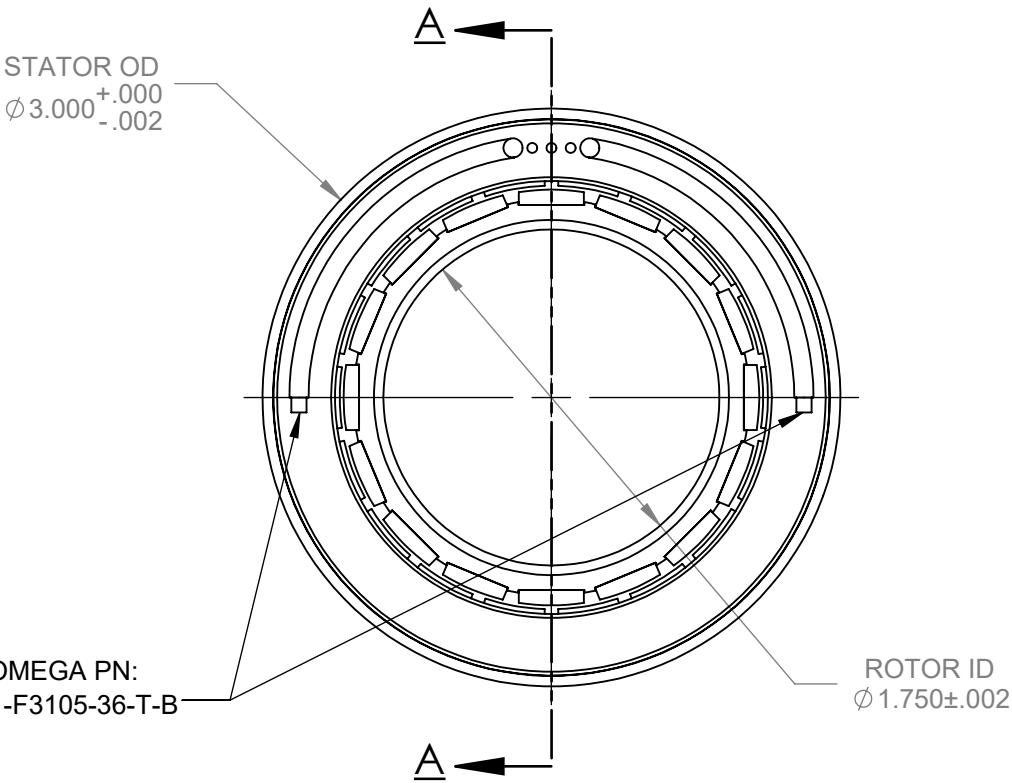


PROPRIETARY STATEMENT: THIS DOCUMENT CONTAINS CONFIDENTIAL INFORMATION PROPRIETARY TO AVEOX, INC. IT MAY NOT BE DUPLICATED IN WHOLE OR IN PART, DISCLOSED TO UNAUTHORIZED PERSONS, OR USED IN THE MANUFACTURE OF PARTS, ASSEMBLIES, OR FOR MANUFACTURING PROCESSES DEFINED HEREIN, WITHOUT PRIOR WRITTEN PERMISSION FROM AVEOX, INC.

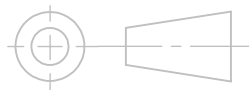
REVISIONS			
REV.	DESCRIPTION	DATE	APPROVED
A	INITIAL RELEASE PER ECO # 7778	11/4/2019	SEE ECO APPROVAL

NOTES: (UNLESS OTHERWISE SPECIFIED)

1. STATOR LEAD WIRE PER M22759/11  
PHASE A: RED  
PHASE B: WHITE  
PHASE C: BLACK
2. SEE TABLE SHEET 2 FOR CONFIGURATION



SECTION A-A  
SCALE 1 : 1

UNLESS OTHERWISE SPECIFIED: DIMENSIONS ARE IN INCHES			CONTRACT No.		AVEOX, INC. 2265A Ward Avenue Simi Valley, CA. 93065 805-915-0200 (Phone) 805-915-0201 (FAX)					
TOLERANCE ON ANGLE: ±0.5° ON DECIMALS: INCH MILLIMETER SURFACE(µin.) .XX ±.01 .X ±.5mm 63/ .XXX ±.005 .XX ±.1mm REMOVE ALL BURRS BRAKE CORNERS R.005/.010. INTERPRET DRAWING PER ASME Y14.5-2009 DO NOT SCALE DRAWING DIMENSIONS APPLY AFTER SURFACE FINISH			APPROVALS		DATE					
			DRAWN E. NG		11/4/19					
			CHECK							
			ENGINEER							
THIRD ANGLE PROJECTION 			SIZE		CAGE CODE		DWG No.		REV	
			B		1C2S2		6100328-XX		A	
			SCALE: NONE		CALC. WEIGHT:		SHEET		1 OF 2	

4

3

2

1

PROPRIETARY STATEMENT: THIS DOCUMENT CONTAINS CONFIDENTIAL INFORMATION PROPRIETARY TO AVEOX, INC.  
IT MAY NOT BE DUPLICATED IN WHOLE OR IN PART, DISCLOSED TO UNAUTHORIZED PERSONS, OR USED IN THE MANUFACTURE  
OF PARTS, ASSEMBLIES, OR FOR MANUFACTURING PROCESSES DEFINED HEREIN, WITHOUT PRIOR WRITTEN PERMISSION FROM AVEOX, INC.

REVISIONS			
REV.	DESCRIPTION	DATE	APPROVED
-	See Sheet1	-	-

PART NUMBER	DESCRIPTION	ROTOR LENGTH "R"	LEAD WIRE AWG	LEAD WIRE LENGTH "L"	STACK LENGTH "Z" INCLUDING ENDLAM	ENDTURN HEIGHT, LEAD SIDE "X"	ENDTURN HEIGHT, BOTTOM "Y"
6100328-01	O&M STATOR AND ROTOR SET 3005-16P/10, SENSORLESS	0.500	18	12	0.58	0.475	0.275
6100328-02	O&M STATOR AND ROTOR SET 3010-16P/10, SENSORLESS	1.000	18	12	1.08	0.475	0.275
6100328-03	O&M STATOR AND ROTOR SET 3020-16P/10, SENSORLESS	2.000	18	12	2.08	0.475	0.275
6100328-04	O&M STATOR AND ROTOR SET 3030-16P/10, SENSORLESS	3.000	18	12	3.08	0.475	0.275
6100328-05	O&M STATOR AND ROTOR SET 3015-16P/10, SENSORLESS	1.500	18	12	1.58	0.475	0.275
6100328-06	O&M STATOR AND ROTOR SET 3007-16P/10, SENSORLESS	0.750	18	12	0.83	0.475	0.275

AVEOX

POWER TO MOTION

AVEOX, INC.

2265A Ward Avenue Simi Valley, CA. 93065

805-915-0200 (Phone) 805-915-0201 (FAX)

TITLE:

O&M DWG STATOR AND ROTOR SET  
3000-16P, SENSORLESS, TABULATED

SIZE	CAGE CODE	DWG No.	REV
B	1C2S2	6100328-XX	A

SCALE: NONE	SHEET	2 OF 2
-------------	-------	--------

FORM: 6890115-02 Rev. C

B

A